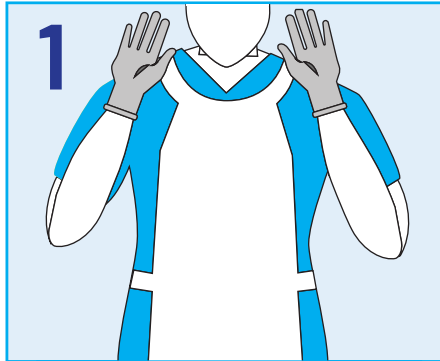
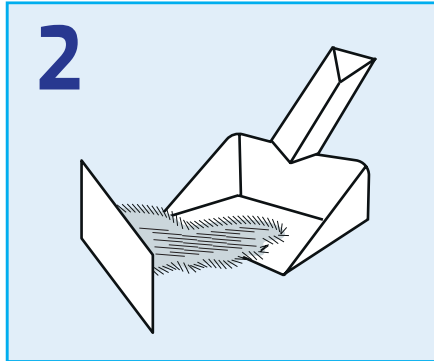


## Environmental Hygiene & Disinfection

CLEAN AND DISINFECT IN ONE STEP WITH SOCHLOR DST



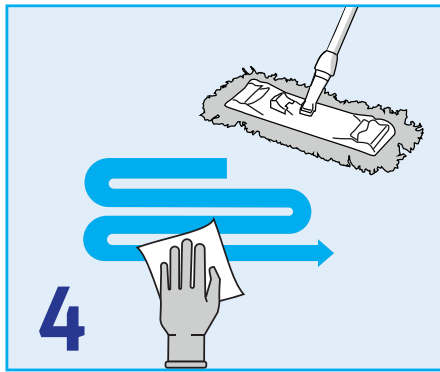
1 Wear disposable gloves and apron.



2 Remove any gross contamination, particularly urine & vomit, before applying SoChlor.



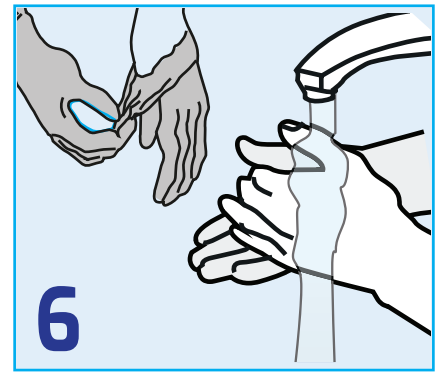
3 Dissolve SoChlor tablets (according to dilution instructions below) in cold water. If solution is older than 24hrs make new solution.



4 Use solution according to your hospital policy. Once applied, allow surfaces to air dry. (5 min contact time recommended)



5 If older than 24 hours, dispose of remaining solution into sluice or drain with cold running water, BEFORE removing PPE.



6 Dispose of all used materials as clinical waste. Wash your hands after removing gloves and apron

## Dilution Instructions

### Dilution rates for SoChlor DST per 1 litre of water

Environmental Situation	Required amount of available chlorine	SoChlor DST / 1.7g NaDCC Tablet (MFB256 / MFB294)
Standard clean and disinfection	1,000 ppm	1
Outbreak Disinfection	5,000 ppm	5
Disinfection of blood or blood-stained spills	10,000 ppm	10

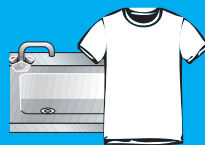
## Safety & Precautions



**DON'T** take internally, avoid eye and direct skin contact.



**DON'T** mix directly with acids\* or cationic detergents \*eg. urine or vomit.



**AVOID PROLONGED** contact with stainless steel or clothing.



**ALWAYS** keep out of the reach of children & vulnerable patients.



**ALWAYS** dispose used materials as clinical waste.



**ALWAYS** make fresh solution if solution date is not known.



**ALWAYS** replace lid after use and store in a secure dry place.



**WHERE POSSIBLE** ensure good ventilation.



Video: Scan to watch procedure guide



Chat support via [gvhealth.com](https://www.gvhealth.com)



01920 463 098



[support@gvhealth.com](mailto:support@gvhealth.com)

© 2024 GV Health Ltd. All rights reserved.



GV Health  
Life. Protected.