

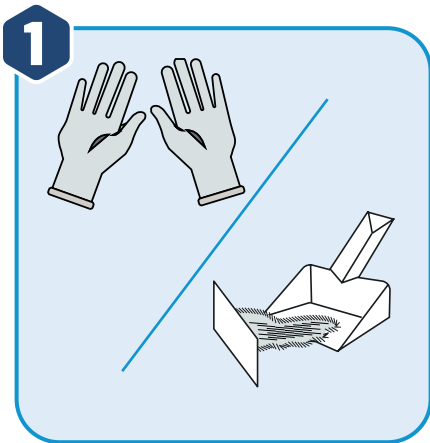


Life Protected Cleaner
Water Soluble Matrix

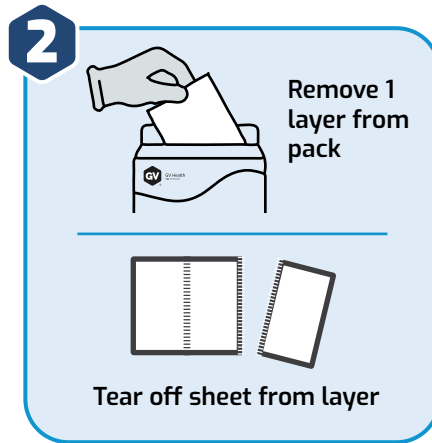


GV Health
Life. Protected.

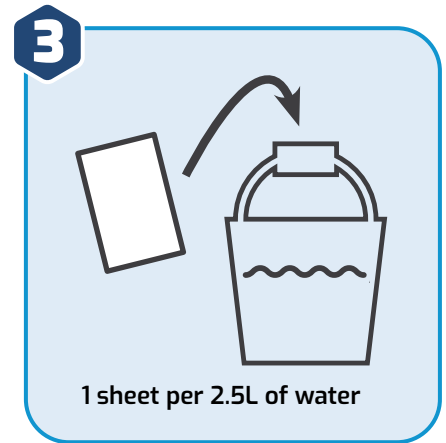
Life Protected Cleaner (LPC) Floor Cleaning Usage Guidance



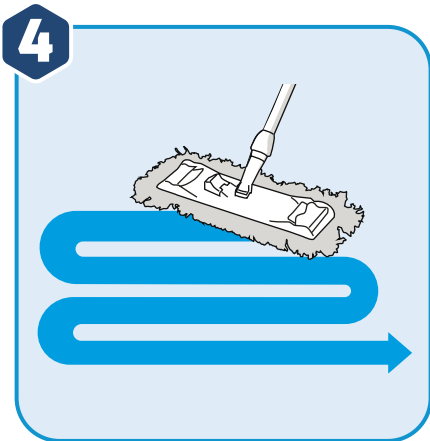
1 Wash hands, put on gloves and ensure gloves are dry. Remove loose debris



2 Remove 1 layer from pack
Tear off sheet from layer
Take one layer from LPC pack and remove required sheets (tear across perforation). Place remainder back in pack. (Ensure gloves dry)



3 1 sheet per 2.5L of water
Fill container with water, add 1 sheet per 2.5 litres and stir until fully dissolved



4 Fully submerge mop in solution. Wring out excess solution. Mop in 'S' or 'figure of 8' pattern. From clean to dirty



5 Replace the mop head and cleaning solution as required throughout the cleaning process. Leave surface to air dry



6 Do not touch skin
Dispose of used cleaning solution down a sink or drain. Remove gloves and wash hands

Application	Usage rate (Litres per sheet)
Floors	2.5

Scan to
access full
usage guides
& SDS



Life Protected Cleaner
Water Soluble Matrix

GV Health Ltd
Hall House, 2 Arlington Court, Whittle Way, Arlington Business Park
Stevenage, Hertfordshire, SG1 2FS, UK
T +44 (0)1920 463 098 E info@gvhealth.com