

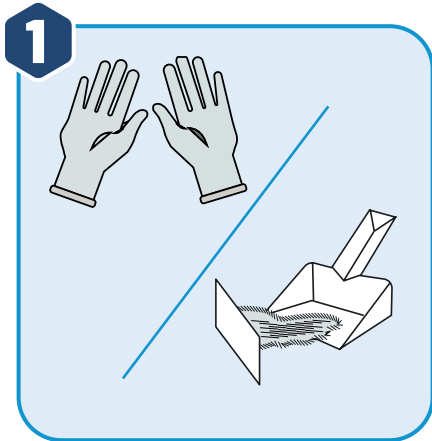


Life Protected Cleaner
Water Soluble Matrix

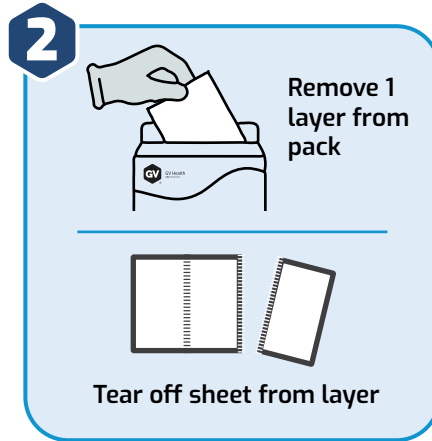


GV Health
Life. Protected.

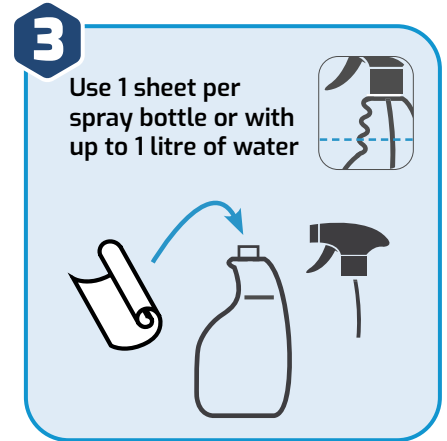
Life Protected Cleaner (LPC) Hard Surfaces Usage Guidance



Wash hands, put on gloves and ensure gloves are dry. Remove loose debris

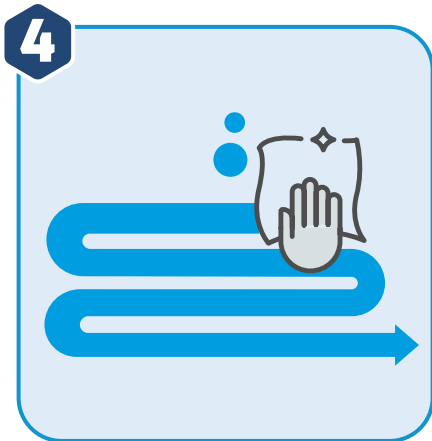


Remove 1 layer from pack
Tear off sheet from layer



Use 1 sheet per spray bottle or with up to 1 litre of water

Fill container with water, add 1 sheet per litre and stir/shake until fully dissolved



Dampen applicator with solution and wipe in 'S' or 'figure of 8' pattern. From clean to dirty



Replace the applicator and cleaning solution as required throughout the cleaning process



Do not touch skin

Dispose of used cleaning solution down a sink or drain (if required). Remove gloves and wash hands

Application	Usage rate (Litres per sheet)
Hard Surfaces	1

Scan to access full usage guides & SDS



Life Protected Cleaner
Water Soluble Matrix

GV Health Ltd
Hall House, 2 Arlington Court, Whittle Way, Arlington Business Park
Stevenage, Hertfordshire, SG1 2FS, UK
T +44 (0)1920 463 098 E info@gvhealth.com

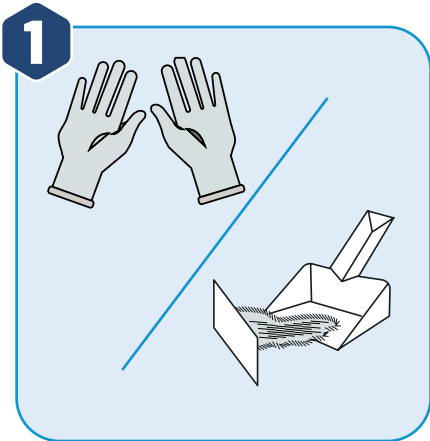


Life Protected Cleaner
Water Soluble Matrix

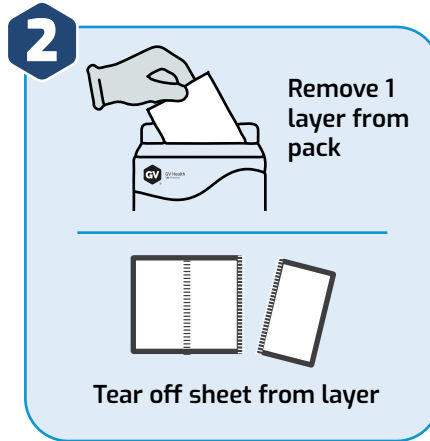


GV Health
Life. Protected.

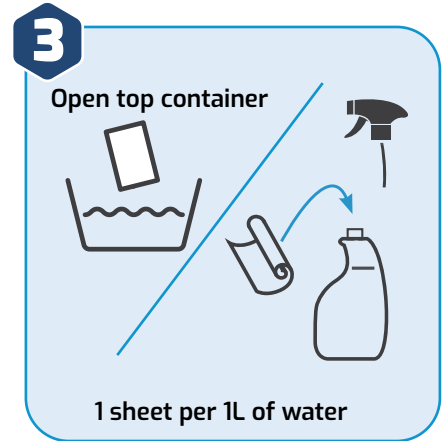
Life Protected Cleaner (LPC) Hard Surfaces Cleaning Guidance



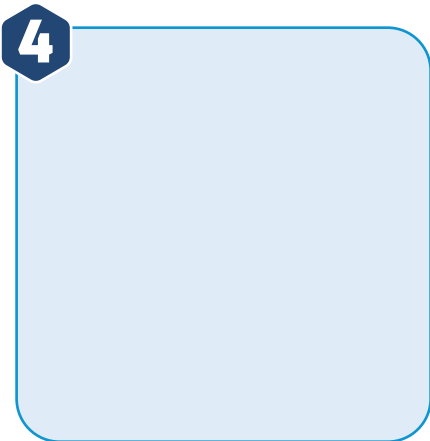
1 Wear gloves. Prep hard surface by removing any loose debris



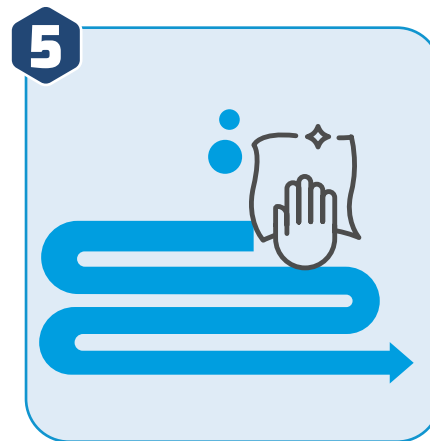
2 Remove 1 layer from LPC Pack and tear off 1 sheet segment across perforation. Put back remaining segments in pack. (Ensure gloves dry)



3 **Open top container:** Fill 1L water, add 1 sheet gently shake until fully dissolved. **Open container:** Fill 1L water, add 1 sheet gently swirl until fully dissolved.



4 **Spray** into applicator or onto surface. **Open container** submerge cloth, wring excess solution.



5 Wipe in an 'S' or figure of '8' motion. From clean to dirty.



6 Dispose of used cleaning solution down a sink or drain. Remove gloves and wash hands

Application	Usage rate
Hard Surfaces	Litres per sheet 1

Scan to access full usage guides & SDS



Life Protected Cleaner
Water Soluble Matrix

GV Health Ltd
Hall House, 2 Arlington Court, Whittle Way, Arlington Business Park
Stevenage, Hertfordshire, SG1 2FS, UK
T +44 (0)1920 463 098 E info@gvhealth.com