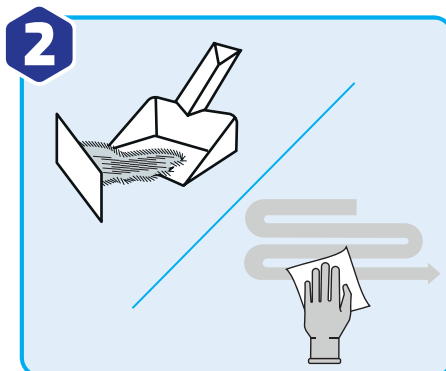


Environmental Hygiene & Disinfection

CLEAN AND DISINFECT IN ONE STEP WITH SOCHLOR DST



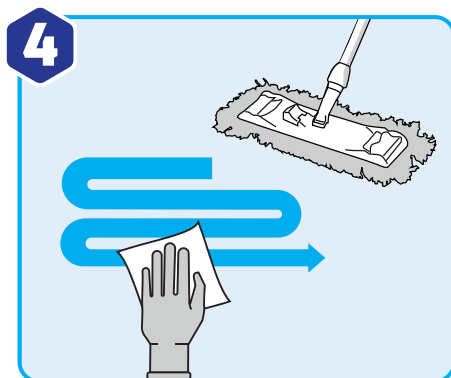
1 Wash hands and put on disposable gloves and apron



2 Before applying SoChlor, remove visible soil, including urine and vomit



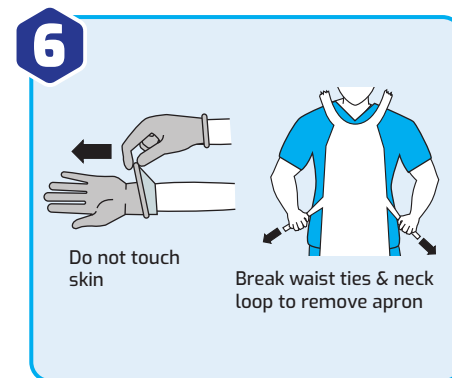
3 Dissolve the specified number of SoChlor tablets in cold water as indicated in the table below. Replace any solution older than 24 hours



4 Use solution according to your hospital policy. Once applied, allow surfaces to air dry. 5 min contact time recommended for general use



5 Dispose of remaining solution into sluice or drain with cold running water, BEFORE removing gloves and apron



6 Do not touch skin. Break waist ties & neck loop to remove apron. Dispose of all used materials as clinical waste. Wash your hands after removing gloves and apron

Dissolution Instructions

Disinfection requirement	Active chlorine concentration	Number of tablets per litre of water
General disinfection	1,000 ppm	1
Outbreak disinfection	5,000 ppm	5
Blood spill disinfection	10,000 ppm	10

Safety & Precautions



DON'T take internally, avoid eye and direct skin contact



DON'T mix directly with acids or amines eg. vomit or urine



ALWAYS keep out of the reach of children & vulnerable patients



ALWAYS dispose used materials as clinical waste



ALWAYS make fresh solution if solution date is not known



ALWAYS replace lid after use and store in a secure dry place



WHERE POSSIBLE ensure good ventilation



Video: Full DST procedure guide



Video: PPE removal procedure guide



Contact us for usage guidance against specific pathogens

Tel: +44(0)1920 463 098
Email: support@gvhealth.com
Chat: gvhealth.com