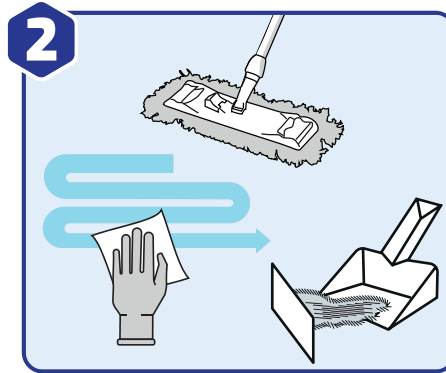


Environmental Hygiene & Disinfection

DISINFECTING SURFACES WITH SOCHLOR TAB



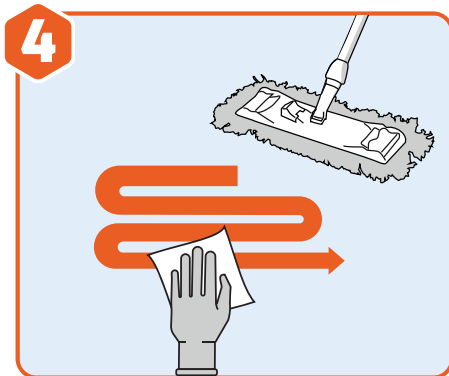
1 Wash hands and put on disposable gloves and apron



2 **Surface preparation & cleaning:** Before applying SoChlor, remove visible soil with detergent and clean thoroughly, including urine and vomit.



3 Dissolve the specified number of SoChlor tablets in cold water as indicated in the table below. Replace any solution older than 24 hours



4 Use solution according to your hospital policy. Once applied, allow surfaces to air dry. 5 min contact time recommended for general use



5 Dispose of remaining solution into sluice or drain with cold running water, **BEFORE** removing gloves and apron



6 Dispose of all used materials as clinical waste. Wash your hands after removing gloves and apron

Dissolution Instructions

Disinfection requirement	Active chlorine concentration	Number of tablets per litre of water	
		1.7g	2.5g
Standard disinfection	1,000 ppm	1	1
Outbreak disinfection	5,000 ppm	5	4
Blood spill disinfection	10,000 ppm	10	7

Safety & Precautions



DON'T take internally, avoid eye and direct skin contact



DON'T mix directly with acids or amines eg. vomit or urine



ALWAYS keep out of the reach of children & vulnerable patients



ALWAYS dispose used materials as clinical waste



ALWAYS make fresh solution if solution date is not known



ALWAYS replace lid after use and store in a secure dry place



WHERE POSSIBLE ensure good ventilation



Video: Scan to learn more about SoChlor



Video: PPE removal procedure guide



Contact us for usage guidance against specific pathogens

Tel: +44(0)1920 463 098
Email: support@gvhealth.com
Chat: gvhealth.com